

Year One

Phonics Screening Check

Children's Materials



lig





chin



mep

gax





deck



horn

emp



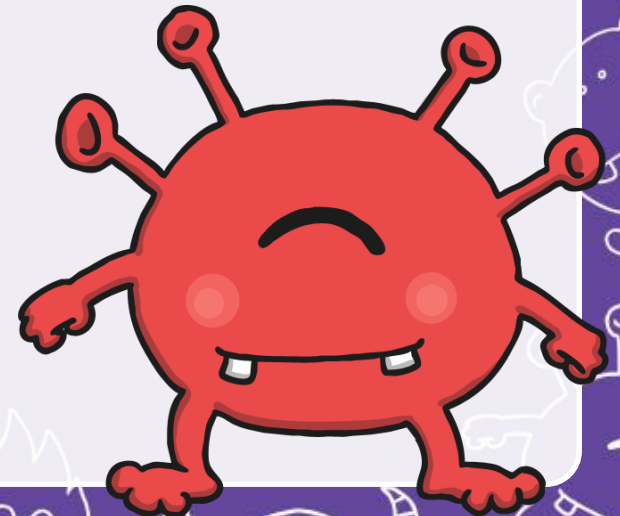
beff



The background is a solid purple color. A white border runs around the perimeter, featuring a repeating pattern of various cartoonish, white-outlined creatures. These include a bat-like monster with wings and a wide grin, a ghost-like figure with a single eye, a bear-like creature with a large mouth and small teeth, a round creature with multiple eyes, and a creature with a crown. The central area is a white rounded rectangle containing the word "queen" in a bold, black, lowercase sans-serif font.

queen

shup



doil





tram

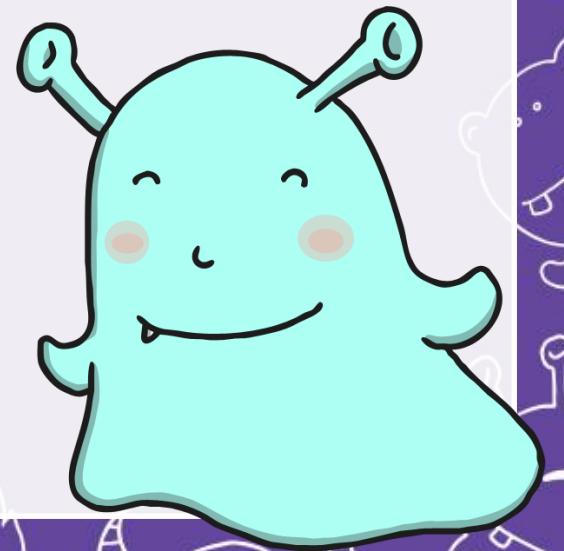
charb





press

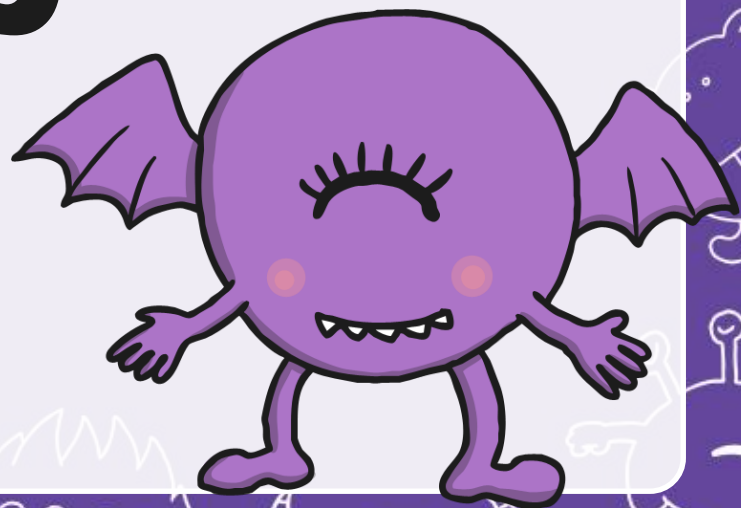
frex





self

criff



haps





keeps

barst





stair



lied



phope

woats





arrow

rird





haunt



wove



scram

floost





drank

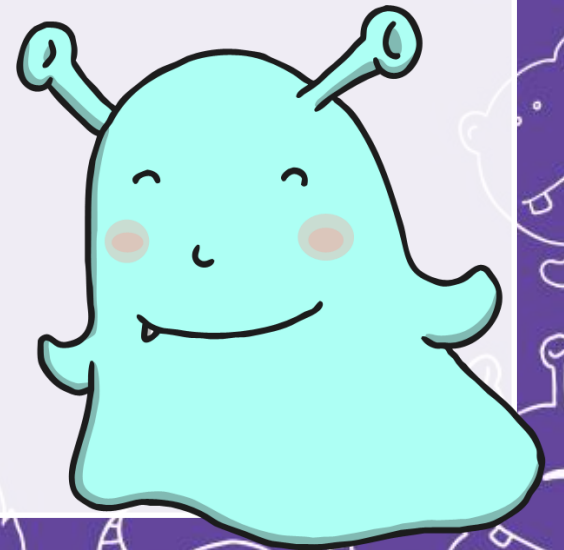


stroke



treats

strobe



The background is a solid purple color. It is framed by a white border that contains various cartoon-style monsters and creatures. These include a bat-like creature with wings, a ghost-like figure, a creature with a large mouth and sharp teeth, a creature with a single eye and a wide grin, and several other whimsical, multi-limbed or multi-eyed creatures. The central area of the page is white and contains the word "wishing" in a large, bold, black, lowercase sans-serif font.

wishing



jigh

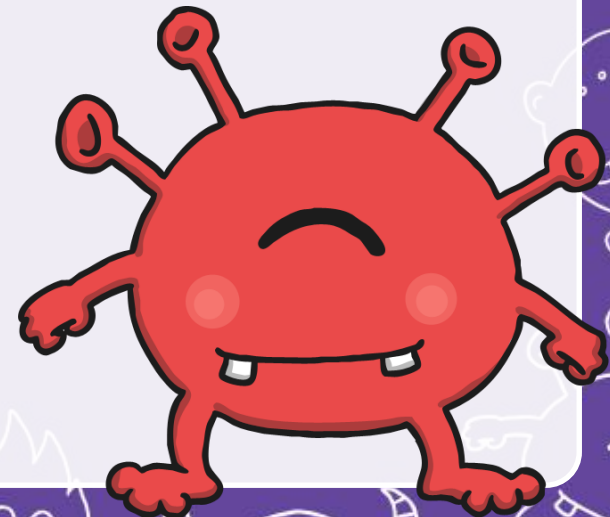
splam





brighter

glips





forest

